

# Twist cfDNA Library Preparation Kit With Twist Full Length UDI Adapters

For use with the Twist PCR-free Whole Genome Sequencing Workflow

This Twist Whole Genome Sequencing Workflow details all the necessary steps for generating PCR-free indexed libraries that can be sequenced on Illumina next-generation sequencing (NGS) systems. The workflow prepares genomic DNA (gDNA) libraries using mechanically fragmented DNA and full-length Y-shaped adapters. The Twist cfDNA Library Preparation Kit contains new enzymes and buffers that have been reformulated and optimized to provide best-in-class indexed libraries and can be used on sample types other than cfDNA where the efficient conversion of DNA is required. This library preparation workflow is optimized for use with the reagents specified and should only be performed with them or their equivalents.



**Twist NGS Workflow.** The complete NGS workflow takes you from sample preparation to NGS sequencing and data analysis.

*For Research Use Only. Not intended for use in diagnostic procedures.*

**DON'T SETTLE FOR LESS IN TARGETED SEQUENCING.**

Get in touch at [sales@twistbioscience.com](mailto:sales@twistbioscience.com) or learn more at [twistbioscience.com/products/ngs](https://twistbioscience.com/products/ngs)



# PROTOCOL COMPONENTS

Please read the product packaging and storage recommendations carefully for each kit and store components as recommended immediately upon arrival.

CATALOG #	NAME	DESCRIPTION	STORAGE
TWIST CFDNA LIBRARY PREPARATION KIT (REAGENTS FOR LIBRARY CONSTRUCTION)			
107603: 16 rxn 107604: 96 rxn	Twist cfDNA Library Preparation Kit 1	<ul style="list-style-type: none"><li>· 5X Twist ERAT Enzyme Mix</li><li>· 10X Twist ERAT Buffer</li><li>· 20X Twist DNA Ligation Mix 2.0</li><li>· 4X Twist DNA Ligation Buffer 2.0</li></ul>	-20°C
	Twist Library Preparation Kit 2	DNA Purification Beads	2-8°C
107381, 107469, 107470, 107471: 384 samples, 96-well plate	Twist Full Length UDI Adapters, Plate 1-16	Full Length Adapter Set, 1 reaction per index	-20°C



## LEGAL

---

This document may contain references to other third-party resources such as sources of information, hardware or software, products, or services and/or web sites owned or licensed by third parties. Twist Bioscience does not control or take responsibility for any third-party resources, including, without limitation, the accuracy, reliability, copyright compliance, compatibility, performance, legality, or any other aspect of third-party resources. The inclusion of such resources in this document does not imply endorsement by Twist Bioscience of any third-party resources.

Certain processes described in this document may be subject to patent rights or licenses in local jurisdictions, including those owned or licensed by parties other than Twist Bioscience. Purchase of this product does not include a license to perform any such processes. Users of this product may, therefore, be required to obtain a patent license depending upon the particular application and country in which the product is used before performing such processes.

Twist Bioscience, the various Twist logos, and the Twist NGS logo used herein are trademarks of Twist Bioscience Corporation. All other trademarks are the property of their respective owners.

©2024 Twist Bioscience Corporation. All rights reserved.

## INTENDED USE

---

This product is for research use only. This product is not intended for the diagnosis, prevention, or treatment of a disease or condition. Twist Bioscience assumes no liability regarding use of the product for applications in which it is not intended.



## TABLE OF CONTENTS

---

Twist cfDNA Library Preparation Protocol	1
Materials Supplied by User	5
General Notes and Precautions	6
Guidelines for cfDNA Samples	7
Protocol Overview	8
 Step 1: Perform End Repair and dA-Tailing	 9
• Prepare the Thermal Cycler, Samples, and Reagents	9
• Perform End Repair and dA-Tailing (ERAT)	10
 Step 2: Ligate Indexed Adapters, Purify and Perform QC	 11
• Ligate Adapters	11
• Purify	12
• 2nd Purify (Optional)	13
• Perform QC	14
 Appendix A: Obtaining Larger Insert Sizes and Handling Alternative Mass Inputs	 15
Appendix B: Full Length UDI Adapter Sequences and Plate Map	16



## MATERIALS SUPPLIED BY USER

The following materials or their equivalent are required to generate libraries using the Twist cfDNA Library Preparation Kit and Twist Full Length UDI Adapters.

PRODUCT	SUGGESTED SUPPLIER
REAGENTS AND CONSUMABLES	
Molecular biology grade water	—
10 mM Tris-HCl pH 8 (optional)	—
Buffer EB (optional)	Qiagen
1.5-ml microcentrifuge tubes	VWR
Thin-walled PCR 0.2-ml strip-tubes	Eppendorf
96-well thermal cycling plates	VWR
96-well compatible magnetic plate	Alpaqua, Permagen Labware
Qubit dsDNA Broad Range Quantitation Assay	Thermo Fisher Scientific
Agilent High Sensitivity DNA Kit	Agilent Technologies
qPCR Library Quantification Kit	—
Ethanol (200 proof)	—
EQUIPMENT	
Pipettes and tips	—
Vortex mixer	—
Benchtop mini centrifuge for 0.2-ml tubes	—
Thermal cycler (96 well) with heated lid	—
Fluorometer (Qubit 3.0)	Thermo Fisher Scientific
2100 Bioanalyzer	Agilent Technologies
Real-Time PCR Instrument	—



## GENERAL NOTES AND PRECAUTIONS

---

Wear appropriate protective equipment (lab coat, gloves, and protective glasses or goggles) at all times when performing this protocol.

For best results, read this document before performing the protocol and follow the instructions provided. Twist cannot guarantee the performance of the workflow if modifications are made to the protocol.

This library preparation method may yield more material than needed for sequencing. Excess product can be stored at  $-20^{\circ}\text{C}$  for later use.

Test the compatibility of your thermal cycler and PCR tubes by incubating at  $95^{\circ}\text{C}$  for up to 5 minutes to ensure the PCR tubes do not crack under heat and pressure. Adjust the tightness of the thermal cycler lid and/or use a spacer specific to the thermal cycler model.



## GUIDELINES FOR gDNA SAMPLES

---

### FRAGMENTED SAMPLES

- Use any desired mechanical shearing method to prepare gDNA samples for use with this protocol.
- For optimum performance, analyze the size distribution of the fragmented gDNA with an Agilent High Sensitivity DNA Kit before proceeding with end repair and dA-tailing reactions. Ensure the mode of the fragment size distribution is 300 bp to 350 bp.
- To optimize insert size, refer to Appendix A: Obtaining Larger Insert Sizes and Handling Alternative Mass Inputs.
- The recommended DNA input is 20 ng to 1000 ng of gDNA. Using under 20 ng of starting mass may impact library quality.
- When using degraded DNA or low mass inputs, modify adapter input following the guidelines outlined in Appendix A: Obtaining Larger Insert Sizes and Handling Alternative Mass Inputs.
- Input DNA should be suspended in molecular biology grade water, 10 mM Tris-HCl pH 8.0, or Buffer EB.
- Use the Thermo Fisher Scientific Qubit dsDNA Broad Range Quantification Assay to accurately quantify input gDNA.
- Measuring gDNA concentration by absorbance at 260 nm or fluorescence is not recommended.

**FOR TECHNICAL SUPPORT, CONTACT [CUSTOMERSUPPORT@TWISTBIOSCIENCE.COM](mailto:CUSTOMERSUPPORT@TWISTBIOSCIENCE.COM).**



## PROTOCOL OVERVIEW

---

This protocol begins with fragmented input genomic DNA (gDNA) and generates indexed libraries for whole genome sequencing applications. It features mechanical fragmentation and full-length unique dual index (UDI) adapters. This protocol allows you to perform gDNA library preparation (Steps 1–2) in less than 2.5 hours.

LIBRARY PREPARATION WITH CFDNA KIT AND FULL-LENGTH UDI ADAPTERS		TIME
<b>STEP 1</b>	<b>Perform End Repair and dA-Tailing</b> dA-Tailed gDNA Fragments	<b>1 hour</b>
<b>STEP 2</b>	<b>Ligate Full-Length UDI Adapters, Purify, and Perform QC</b> Indexed gDNA Libraries	<b>1.5 hours</b>



## STEP 1 PERFORM END REPAIR AND DA-TAILING

Use mechanically fragmented input genomic DNA (gDNA) to perform end repair and subsequent dA-tailing to generate dA-tailed DNA fragments. Use any desired mechanical shearing method to prepare the fragmented gDNA sample. For optimum performance, analyze the size distribution of the fragmented input gDNA with an Agilent High Sensitivity DNA Kit before proceeding with end repair and dA-tailing reactions. Ensure the mode of the fragment size distribution is 300–350 bp.

### Reagents Required

- Fragmented genomic DNA (gDNA): 20 ng to 1 µg per sample (prepared using any desired mechanical fragmentation method)
- Molecular biology grade water (chilled)
- Optional 10 mM Tris-HCl pH 8 or Buffer EB
- Qubit dsDNA Broad Range Quantitation Assay (or equivalent)
- From the Twist cfDNA Library Preparation Kit 1:
  - 5X Twist ERAT Enzyme Mix
  - 10X Twist ERAT Buffer

### Before You Begin

- Thaw 5X Twist ERAT Enzyme Mix on ice, then mix by flicking the tube with a finger.
- Thaw 10X Twist ERAT Buffer on ice, then mix by pulse vortexing for 2 seconds. If the buffer contains a white precipitate, vigorously vortex the buffer until the precipitate dissolves.
- Place molecular biology grade water, 10 mM Tris-HCl pH 8, or Buffer EB on ice.

## PREPARE THE THERMAL CYCLER, SAMPLES, AND REAGENTS

- 1.1** Program the thermal cycler with the following conditions. Set the temperature of the heated lid to 70°C.

Start the program to pre-chill the thermal cycler.

STEP	TEMPERATURE	TIME
1	4°C	HOLD
2	32°C	22 min
3	65°C	30 min
4	4°C	HOLD



- 1.2** Use the Qubit dsDNA Broad Range Quantitation Assay to determine the concentration of your gDNA samples.
- 1.3** There is 35 µl available for gDNA input within the 50 µl ER/AT reaction. Dilute the gDNA samples to the desired concentration with water, 10 mM Tris-HCl pH 8, or Buffer EB. Mix well with gentle pipetting.
- 1.4** Add 35 µl of each diluted gDNA sample (20 ng to 1 µg total gDNA) into a 0.2-ml thin-walled PCR strip-tube or well of a 96-well thermal cycling plate and place on ice.
- 1.5** Pulse-spin to ensure all of the solution is at the bottom of the tube.

## PERFORM END REPAIR AND dA-TAILING (ERAT)

- 1.6** Prepare an ERAT reaction master mix in a 1.5-ml microcentrifuge tube on ice. Use the volumes listed below. Mix thoroughly by gentle pipetting.

REAGENT	VOLUME PER REACTION*
10X Twist ERAT Buffer	5 µl
5X Twist ERAT Enzyme Mix	10 µl
<b>Total</b>	<b>15 µl</b>

*\*Prepare a master mix for multiple reactions.*

- 1.7** Add 15 µl ERAT reaction master mix (from Step 1.6) to each 35 µl gDNA sample well or tube and mix well by gentle pipetting. Cap the tube and keep the reaction on ice.
- 1.8** Pulse-spin the sample plate or tubes and immediately transfer to the pre-chilled thermal cycler.
- 1.9** Proceed with steps 2–4 of the thermal cycler program in Step 1.1 above (32°C step of the thermal cycler program).  
**NOTE:** While the thermal cycler program is running, prepare the reagents for Step 2 Ligate Indexed Adapters, Purify, and Perform QC (see Before You Begin).
- 1.10** When the thermal cycler program is complete and the sample block has returned to 4°C, remove the samples from the block and place them on ice.

**PROCEED IMMEDIATELY TO STEP 2: LIGATE INDEXED ADAPTERS, PURIFY, AND PERFORM QC**



## STEP 2

## LIGATE INDEXED ADAPTERS, PURIFY, AND PERFORM QC

Ligate adapters to the dA-tailed DNA fragments from Step 1 and purify them to generate indexed gDNA libraries. Perform QC to complete the protocol.

### Reagents Required

- dA-tailed DNA fragments (from Step 1.10)
- Ethanol
- Molecular biology grade water (chilled)
- Optional 10 mM Tris-HCl pH 8 or Buffer EB
- From the Twist cfDNA Library Preparation Kit 1:
  - 20X Twist DNA Ligation Mix 2.0
  - 4X Twist DNA Ligation Buffer 2.0
- From the Twist Full Length UDI Adapter Set:
  - Twist Full Length UDI Adapters (plate)
- From the Twist Library Preparation Kit 2:
  - DNA Purification Beads

### Before You Begin

- Thaw on ice, then mix by vortexing:
  - Molecular biology grade water
  - Twist Full Length UDI Adapters (plate)
  - 20X Twist DNA Ligation Mix 2.0
  - 4X Twist DNA Ligation Buffer 2.0
- Prepare 0.5 ml 80% ethanol for each sample
- Equilibrate DNA Purification Beads to room temperature for at least 30 minutes (for use in both Steps 2 and 3 of the protocol).

### LIGATE TWIST FULL LENGTH UDI ADAPTERS

**2.1** Program the thermal cycler with the following conditions. Turn off the heated lid or set it to the minimum temperature. Start the program to pre-chill the thermal cycler.

STEP	TEMPERATURE	TIME
1	25°C	HOLD
2	25°C	15 min
3	4°C	HOLD

**2.2** Add 5.5 µl Twist Full Length UDI Adapters into each sample well or tube containing the dA-tailed DNA fragments from Step 1. Mix gently by pipetting and keep on ice.  
**NOTE:** When using degraded DNA or mass inputs <300 ng, modify adapter input following Appendix A: Obtaining Larger Insert Sizes and Handling Alternative Mass Inputs.

**2.3** Prepare the ligation master mix in a 1.5-ml microcentrifuge tube on ice as indicated below. Mix well by vortexing.

REAGENT	VOLUME PER REACTION*
Water (chilled)	14.5 µl
4X Twist DNA Ligation Buffer 2.0	25 µl
20X Twist DNA Ligation Mix 2.0	5 µl
<b>Total</b>	<b>44.5 µl</b>

\*Prepare a master mix for multiple reactions.

**2.4** Add 44.5 µl of the ligation master mix to the sample(s) from Step 2.1 and mix well by gentle pipetting.

**2.5** Seal or cap the tubes and pulse-spin to ensure all solution is at the bottom of the tube.

**2.6** Incubate the ligation reaction at 25°C by proceeding with steps 2–3 of the thermal cycler program in Step 2.1 above (25°C step of the thermal cycler program).

**IMPORTANT:** Turn off the heated lid or set to minimum temperature.

## PURIFY

**2.7** Vortex the pre-equilibrated DNA Purification Beads until well mixed.

**2.8** Add 50 µl (0.5x) of homogenized DNA Purification Beads to each ligation sample from Step 2.6. Mix well by vortexing.

**NOTE:** For guidance on optimizing library size by modifying SPRI bead ratio refer to Appendix A: Obtaining Larger Insert Sizes and Handling Alternative Mass Inputs.

**2.9** Incubate the samples for 5 minutes at room temperature.

**2.10** Place the samples on a magnetic plate for 1 minute or until the supernatant clears.

**2.11** The DNA Purification Beads form a pellet, leaving a clear supernatant. Without removing the plate or tubes from the magnetic plate, remove and discard the supernatant.

**2.12** Wash the bead pellet by gently adding 200 µl freshly prepared 80% ethanol (do not disturb the pellet). Incubate for 1 minute, then remove and discard the ethanol.



**2.13** Repeat the wash once, for a total of two washes, while keeping the samples on the magnetic plate.

**2.14** Carefully remove all remaining ethanol with a 10- $\mu$ l pipette, making sure not to disturb the bead pellet.

NOTE: Before pipetting, the bead pellet may be briefly spun to collect ethanol at the bottom of the plate or tube and returned to the magnetic plate.

**2.15** Air-dry the bead pellet on the magnetic plate for 5 minutes or until the bead pellet is dry. Do not overdry the bead pellet.

**2.16** Remove the plate or tubes from the magnetic plate and add 22  $\mu$ l water, 10 mM Tris-HCl pH 8, or Buffer EB to each sample. Mix by pipetting until homogenized.

NOTE: If performing optional second purification, instead add 52  $\mu$ l water, 10 mM Tris-HCl pH8, or Buffer EB to each sample.

**2.17** Incubate at room temperature for 2 minutes.

**2.18** Place the plate or tubes on a magnetic plate and let stand for 3 minutes or until the beads form a pellet.

**2.19** Transfer 20  $\mu$ l of the clear supernatant containing the ligated and indexed libraries to a clean thin-walled PCR 0.2-ml strip-tube or 96-well thermal cycling plate. Bead carryover will not impact performance.

NOTE: If performing optional second purification, instead transfer 50  $\mu$ l of clear supernatant containing the ligated and indexed libraries to a clean tube or plate.

## 2ND PURIFY (OPTIONAL)

NOTE: 2nd purification is recommended when performing library preparation on degraded gDNA or mass inputs  $\leq$  100 ng.

**2.20** Vortex the pre-equilibrated DNA Purification Beads until mixed.

**2.21** Add 50  $\mu$ l (1x) homogenized DNA Purification Beads to each ligation sample from Step 2.19. Mix well by vortexing.

**2.22** Incubate the samples for 5 minutes at room temperature.

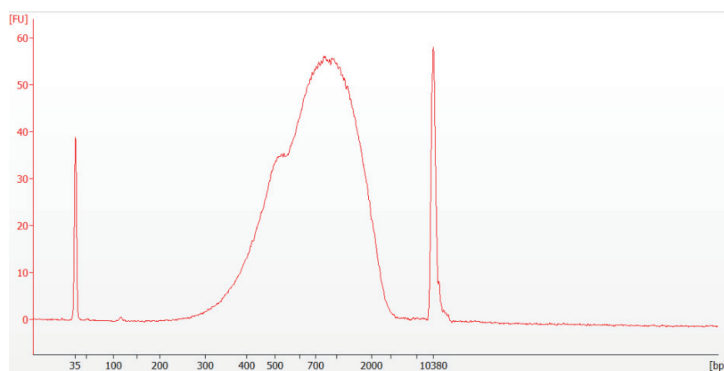
**2.23** Place the samples on a magnetic plate for 1 minute. The DNA Purification Beads form a pellet, leaving a clear supernatant.

**2.24** Without removing the plate or tubes from the magnetic plate, remove and discard the supernatant.

- 2.25** Wash the bead pellet by gently adding 200  $\mu$ l freshly prepared 80% ethanol (do not disturb the pellet), incubate for 1 minute, then remove and discard the ethanol.
- 2.26** Repeat this wash once, for a total of two washes, while keeping the samples on the magnetic plate.
- 2.27** Carefully remove all remaining ethanol with a 10- $\mu$ l pipette, making sure not to disturb the bead pellet.  
NOTE: Before pipetting, the bead pellet may be briefly spun to collect ethanol at the bottom of the plate or tube and returned to the magnetic plate.
- 2.28** Air-dry the bead pellet on the magnetic plate for 5 minutes or until the bead pellet is dry. Do not overdry the bead pellet.
- 2.29** Remove the plate or tubes from the magnetic plate and add 22  $\mu$ l water, 10 mM Tris-HCl pH 8, or Buffer EB to each sample. Mix by pipetting until homogenized.
- 2.30** Incubate at room temperature for 2 minutes.
- 2.31** Place the plate or tubes on a magnetic plate and let stand for 3 minutes or until the beads form a pellet.
- 2.32** Transfer 20  $\mu$ l of the clear supernatant containing the indexed libraries to a clean thin-walled PCR 0.2-ml strip-tube or well of a 96-well thermal cycling plate, making sure not to disturb the bead pellet.

## PERFORM QC

- 2.33** Quantify each library using an appropriate qPCR-based method. A capillary electrophoresis assay can be used to assess the quality of libraries. Note that full-length Y-adapters contain single-stranded regions that slow the migration of molecules in electrophoretic assays leading to larger than expected fragment size profiles. Check for the absence of low molecular weight contamination like adapter dimers.



Representative electropherogram of a library generated with input of 500 ng of high-quality gDNA sheared to a mode of 350 bp using a Covaris ML230. For analysis, the library was diluted 1:10 and run using an Agilent High Sensitivity DNA Kit.

**STOPPING POINT:** If not proceeding immediately to sequencing, store the amplified, indexed libraries at  $-20^{\circ}\text{C}$ .

## END OF WORKFLOW



## APPENDIX A: OBTAINING LARGER INSERT SIZES AND HANDLING ALTERNATIVE MASS INPUTS

### OPTIMIZING LIBRARY SIZE

For applications that require longer insert sizes, the library length can be increased by adjusting fragmentation conditions and the post-ligation SPRI bead ratio. Reducing fragmentation increases overall library size, but can generate broad libraries where shorter fragments preferentially cluster on flow cells during sequencing. Adjusting the post-ligation SPRI bead ratio can remove shorter fragments prior to sequencing. A 0.5X bead ratio is a recommended starting point for generating average library insert sizes >250 bp. To optimize for other insert sizes, test a range of bead ratios between 0.4X and 0.8X. Increase the ratio to retain smaller fragments and reduce the ratio to remove smaller fragments. Note that reducing the bead ratio will reduce library yield.

### ADAPTER LOADING

In PCR-free applications, a small amount of full-length adapters can carry over into sequencing and cluster on the flow cell, which reduces the desired library reads. To minimize residual adapters in the final libraries, the volume of full-length adapters can be adjusted. Refer to the table below for guidance, add additional buffer as needed to reach a total volume of 5.5  $\mu$ l. In addition, performing an optional second 1X SPRI ratio purification after ligation on low mass input or degraded samples can remove residual adapter dimers.

DNA INPUT	VOLUME OF FL ADAPTER ( $\mu$ l)	VOLUME OF TRIS-HCL PH 8.0 ( $\mu$ l)
$\leq 100$	1	4.5
200	2	3.5
300	3	2.5
$\geq 500$	5.5	—



## APPENDIX B: FULL LENGTH UDI ADAPTER SEQUENCES AND PLATE MAP

The Twist Full Length UDI Adapter set contains indexes of 10 nucleotides. To avoid potential index clashes, do not sequence in combination with other adapter sets.

For a complete guide to the Twist Full Length UDI Adapter sequences, please refer to the Full Length UDI Adapter Sequences Reference Spreadsheet and Full Length UDI Adapter Sample Sheet Templates. These files are available for download here: [www.twistbioscience.com/resources/data-files/full-length-unique-dual-index-sequences-reference-spreadsheets-and-sample](http://www.twistbioscience.com/resources/data-files/full-length-unique-dual-index-sequences-reference-spreadsheets-and-sample)

### Representative Plate Layouts

Twist Full Length UDI Adapter, Plates 1 - 16 (107381, 107469, 107470, 107471)

**Plate 1.**

	1	2	3	4	5	6	7	8	9	10	11	12
A	1	9	17	25	33	41	49	57	65	73	81	89
B	2	10	18	26	34	42	50	58	66	74	82	90
C	3	11	19	27	35	43	51	59	67	75	83	91
D	4	12	20	28	36	44	52	60	68	76	84	92
E	5	13	21	29	37	45	53	61	69	77	85	93
F	6	14	22	30	38	46	54	62	70	78	86	94
G	7	15	23	31	39	47	55	63	71	79	87	95
H	8	16	24	32	40	48	56	64	72	80	88	96

**Plate 2.**

	1	2	3	4	5	6	7	8	9	10	11	12
A	97	105	113	121	129	137	145	153	161	169	177	185
B	98	106	114	122	130	138	146	154	162	170	178	186
C	99	107	115	123	131	139	147	155	163	171	179	187
D	100	108	116	124	132	140	148	156	164	172	180	188
E	101	109	117	125	133	141	149	157	165	173	181	189
F	102	110	118	126	134	142	150	158	166	174	182	190
G	103	111	119	127	135	143	151	159	167	175	183	191
H	104	112	120	128	136	144	152	160	168	176	184	192

**Plate 3.**

	1	2	3	4	5	6	7	8	9	10	11	12
A	193	201	209	217	225	233	241	249	257	265	273	281
B	194	202	210	218	226	234	242	250	258	266	274	282
C	195	203	211	219	227	235	243	251	259	267	275	283
D	196	204	212	220	228	236	244	252	260	268	276	284
E	197	205	213	221	229	237	245	253	261	269	277	285
F	198	206	214	222	230	238	246	254	262	270	278	286
G	199	207	215	223	231	239	247	255	263	271	279	287
H	200	208	216	224	232	240	248	256	264	272	280	288

**Plate 4.**

	1	2	3	4	5	6	7	8	9	10	11	12
A	289	297	305	313	321	329	337	345	353	361	369	377
B	290	298	306	314	322	330	338	346	354	362	370	378
C	291	299	307	315	323	331	339	347	355	363	371	379
D	292	300	308	316	324	332	340	348	356	364	372	380
E	293	301	309	317	325	333	341	349	357	365	373	381
F	294	302	310	318	326	334	342	350	358	366	374	382
G	295	303	311	319	327	335	343	351	359	367	375	383
H	296	304	312	320	328	336	344	352	360	368	376	384

END OF APPENDIX